



**Advantage and Technology made in Germany**



*On - Site - Service !*



*STIELOW AIRDRY dehumidifiers and STIELOW HANDYDRY building dryers and industrial dehumidifiers remain what they have always been - products of the highest quality, made in Germany.*

*Manufactured by hand for over 72 years from hundreds of individual parts, the variety of models still requires manual production to this day.*

*Thanks to the high level of vertical integration and large storage capacities, STIELOW dehumidifiers are not affected by the supply chain problem, and Germany has once again proven itself as a production location.*

*Every single STIELOW dehumidifier is created with care and the highest standards of durability, with dedication and attention to detail - guaranteed!*

*That is why every STIELOW dehumidifier always remains something special, sustainable, energy-efficient and resource-saving.*

*We would like to thank you for the trust you have placed in us for over seven decades.*



*finest mechanical engineering tradition since 1952*

## In this brochure:



### Overview

**A**

Seite 4 - 6



### Dehumidifier **DRYMASTER**

**B**

Seite 7



### Dehumidifier **AIRDRY**

**C**

Seite 8 - 14



### Industrial Dehumidifier **AIRDRY**

**D**

Seite 15



### Building Dryer **HANDYDRY**

**E**

Seite 16 - 17



### Special Construction

**F**

Seite 18 - 19



### Accessories & Details

**G**

Seite 20 - 21



### Regulation

**H**

Seite 23



### Technical Data

**I**

Seite 24 - 25



At home in Germany and distributed worldwide, STIELOW dehumidifiers are manufactured in-house in 40 models through research, development and design.

Over 300 equipment variants offer a comprehensive selection for commercial, industrial and private applications. STIELOW can offer optimum conditions for maximum energy efficiency with maximum water extraction like no other manufacturer. Only high-quality materials are used for the electrically powered appliances, which are 100 % recyclable and therefore conserve resources.



STIELOW dehumidifiers have been used all over the world since the 1950s. As a special feature of their time, early appliances can already be found in technical museums.

Today's requirements offer a large range of appliances for a wide variety of applications.

Special STIELOW dehumidifiers, developed in our special construction department, solve problems in industry and genetic engineering, aerospace or aviation just as successfully as tasks in dam construction, airports, shipping, research in general, telecommunications or underground applications. It is the special tasks that make STIELOW dehumidifiers successful. Technologies for room drying in waterworks, storage, water damage repair, classic car drying, building protection and the preserva-



tion of goods of all kinds as well as continuous further development have made STIELOW dehumidifiers a leading product for solving moisture problems.

Every STIELOW dehumidifier is as special as its application.

- In addition to the standard color shades shown, 1,200 color shades can be combined and supplied according to a color fan selection for an additional charge.
- Standard production of STIELOW dehumidifiers in alufame-tec-composite, on request in sheet steel with GLASURIT high-solid paints on a full acrylic base, with two or four final coats depending on the color.
- In use: hot-dip galvanized sheet metal, zinc and aluminium sheet
- Heat exchangers (evaporators and condensers) made of high-quality copper alloys with increased wall thicknesses especially for the refrigeration industry, self-cleaning tube coil evaporators in a vertical arrangement to ensure optimum water drainage. Finely finned condensers enable optimum heat dissipation.
- Unit seals for special applications and aggressive air environments available as an option.
- Device housing also available in V2A design.
- IP 54
- Energy meter
- Airdry-Dehumat-report device monitoring



STIELOW®





## STIELOW DEHUMIDIFIER – the number one energy saver !

- Extensive standard equipment.
- A wide range of options: even small appliances can be ordered with an operating hours counter, calibrated operating hours/electricity meter and lockable castors, special carrying handles and crane hooks.
- Also in the range: solid wall brackets, ARMSTRONG sound-absorbing versions, tropical versions and others.

Comprehensive information can be found in the Accessories & Details section of this brochure !

- **constructive**
- **highly stable**
- **resistant**
- **recycleble**
- **weight-reduced**
- **top finish**
- **noise-insulating**



alufume-tec-composite offers 67 % less weight compared to conventional sheet steel construction as well as a noticeable noise reduction with a more resistant surface and a clean look – a top finish!

The latest generation of appliances is also extremely stable and of course, as with all STIELOW appliances, extremely well constructed. In addition to a long service life, STIELOW dehumidifiers offer even greater energy efficiency thanks to the future-oriented design of the interior as well as an improved appearance, which impresses with its captivating qualities - the appliances last longer.

Long service life and low electricity costs lead to amortization after a short operating time. They form the basis for a long-term economical and effective service life of the dehumidifiers, whose performance efficiency is ensured

by extremely economical refrigeration machines and a sophisticated air technology design that puts them well ahead of other devices. Experience the concentrated power of the latest STIELOW dehumidifier generation with more performance and optimized effect to preserve your values!



Far removed from the traditional box appliance, the STIELOW design offers visual sophistication in every detail – one of the many reasons why STIELOW dehumidifiers are popular and established in all market sectors!

Our customers appreciate the STIELOW service like a smile, which starts with a personal consultation with experienced specialists who are on hand to assist you wherever you are. Benefit from our STIELOW spare parts supply guarantee for all appliances and all years of manufacture.



**FIELD SERVICE  
CUSTOMER SERVICE**  
and  
**SPARE PARTS SUPPLY GUARANTEE**  
offer the  
**On-Site-Service !**



*Service like a smile*

## Advantage and Technology made in Germany



**Maturing Room**



**Manufacturing**



**Koi Oasis**



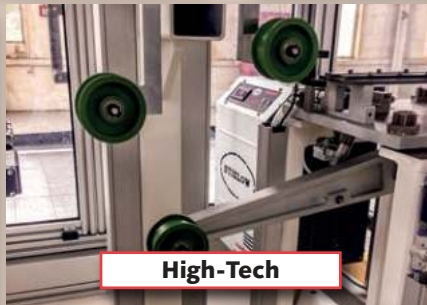
**Car Love**



**Garage**



**Honey Extraction Room**



**High-Tech**



**Wine Shop**



**New Build**



**Bakery**



**Filing System**



**Warehouse**



**Undertunneling**



**Store Room**





# DRYMASTER® Dehumidifier

**B**  
Page 7

- innovative
- fully automatic
- Touchscreen
- only 38 dBA
- washable pollen air filter
- sleep mode
- vollgeblimmt
- display for all device functions
- water overflow stop
- hose connection

**100 cbm Volume**

**14 litre class**

*The little one  
really big!*

**Proven product !**

*High energy-saving potential  
for private and  
commercial use*

**The Original**

STIELOW

**DRYMASTER T8**

**Operating range from 5 to 40°C**

#### Childproof lock

Protecting children from hazards due to incorrect operation



**B**  
Page 7



In an age of ever-increasing human exposure to negative environmental influences such as noise, air pollution and radiation, health and well-being are becoming increasingly important.

The air we breathe, as our most important basis of life, also has a direct impact on human well-being. The largest human organ, our skin, is constantly exposed to the air.

Humidity is of the utmost importance for an acceptable quality of life!

In principle, a distinction is made between

- absolute humidity, which indicates the amount of water vapor contained in 1 kg of air in grams, and
- the relative humidity, which indicates the ratio between the actual amount of water vapor contained and the maximum amount that can be absorbed in %.

The so-called comfort range lies at values between 50 and 65 % rel.

humidity. At these values, people feel comfortable.

Values above 65 % mean that the ambient air is increasingly saturated with moisture and can absorb little water vapor – in common parlance, this condition is referred to as "sultriness" even if the temperature is still the same in °C. This makes physical work more difficult. This makes physical work more difficult and the accumulation of such air conditions even favors the development of rheumatism.

## 14 litre class

## 100 cbm Volume

*Floor unit with bucket*

*Wall unit  
direct drain*

*Wall + floor  
direct drain*



**AIRDRY mini D pro**



**AIRDRY mini bel D pro**



**AIRDRY mini aida D pro**

**Heat pump principle**

Profi-Tipp



**Variant "plus" up to -10°C**





The Central European thermal insulation regulations for living and working spaces pose a far-reaching and serious problem in our times. Due to the use of increasingly better insulation materials, vapor barriers prevent the natural exchange of air and moisture in living and working environments.

Shock ventilation alone does not eliminate the permanent problem of water vapor accumulation in occupied rooms.

These conditions are hazardous to the health of humans and animals and can lead to illnesses as a permanent condition; furnishings such as solid wood and veneer furniture are also damaged.

Visible mildew stains, invisible fungal spores and ultimately visible mold, of which there are over 1,000 different species, are risky and pose a health risk. Once infested, superficial cleaning as well as protective and barrier coatings do not achieve 100% removal. This results in

problem areas where the nuisance of unpleasant odors is an insignificant evil compared to the development of various allergies and serious illnesses.

In contrast, humidity levels below 30% relative humidity are not necessarily perceived as pleasant, but they are harmless in terms of health, as germs and viruses are reduced by dryness and eventually die off, thus significantly minimizing the risk of infectious diseases.

**100 cbm Volume**

**13 litre class**

**New Model !**

*two fan technology*



**AIR DRY compact D pro**



**AIR DRY compact plus D pro**



**Variant "plus" up to -10°C**



- speed-reduced compressors for continuous operation
- fully automatic control
- automatic defrost
- Control panel
- digital humidity controller as standard
- Heat exchanger made of high-quality copper alloys with increased wall thicknesses – Self-cleaning


**16-27 litre class**
**150 - 250 cbm Volume**

*leading for your energy balance*


**AIR DRY 6 D pro**

**AIR DRY 5 D pro**

**Variant "plus" up to -10°C**

**Profi-Tipp**






- Operating hours counter
- Bucket full shut-off
- Hose connection option 3/4 inch
- corrosion-resistant aluframe-tec-composite (anodized) as standard
- Stainless internal appliance parts (stainless steel, copper, non-ferrous metal)



– good perspective thanks to product diversity

400 - 700 cbm Volume

33- 55 litre class

**Bestseller !**

*self-cleaning  
interior / evaporator*



AIR DRY 3 D

AIR DRY 3-2 D



AIR DRY 4 D



Operating range from -10 to 40°C



## Dehumidifier **AIR DRY**



- Wall mounting possible without bracket
- permanent water drainage
- mobile on four castors (ball bearing mounted)
- fully automatic operation
- Heat pump principle



**16-55 litre class**

**150 -700 cbm Volume**

**New Product !**

**AIR DRY T 3 D**

**AIR DRY T 3-2 D**

**AIR DRY T 4 D**

**AIR DRY T 6 D**

**AIR DRY T 5 D**

*30%  
energy saving!*

**Operating range from -10 to 40°C**





## STIELOW-Engineering everything from a single source

STIELOW dehumidifiers type AIRDRY 2 D and AIRDRY 1 D have an inclined evaporator, the condensed water drips over the edge of the heat exchanger to be collected immediately and led to the drain.

The new design results in even

more effective water extraction because the loss of water in the air flow of the appliance through evaporation is almost zero.

The appliances can be pushed directly against the wall at the rear without any disadvantages, the air intake is completely unobstructed

via the sloping edge of the appliance and the standard carrying handles ensure improved handling. The STIELOW aluframe-tec-composite concept offers a weight advantage of 67 % compared to conventional manufacturing processes.

**800 - 1200 cbm Volume**

**65-130 litre class**

*mobile high-performance dehumidifiers*



AIRDRY 2 D



AIRDRY 1 D

Operating range from -10 to 40°C





STIELOW AIRDRY 25 SD and AIRDRY 30 SD dehumidifiers are supplied either on a trolley or with a wall bracket.

The 400 V appliances have a speed-controlled radial fan, which makes them suitable for duct installation as standard.

In combination with state-of-the-art refrigeration technology, the

### Energy-saving technology

dehumidifier design results in the highest possible water removal rates with low energy consumption.

The appliances are extremely quiet thanks to silent-drive.

Important areas of application can be found in defense technology,



sewer installation, vehicle preservation, drinking water supply (open filter systems) and industry.

**183-220 litre class**

**2000 - 3000 cbm Volume**

*Canal installation possible*



**AIRDRY 25 SD**



**AIRDRY 30 SD**

*silent drive*



**Operating range from -10 to 40°C**





- high-performance dehumidifier
- Heat pump principle
- Water production up to 750 l/24 h
- 5 years spare parts free of charge
- Energy saving concept



## Industrial dehumidifiers for the highest demands!

**1800 - 7500 cbm Volume**

**170-750 litre class**

**New Products !**

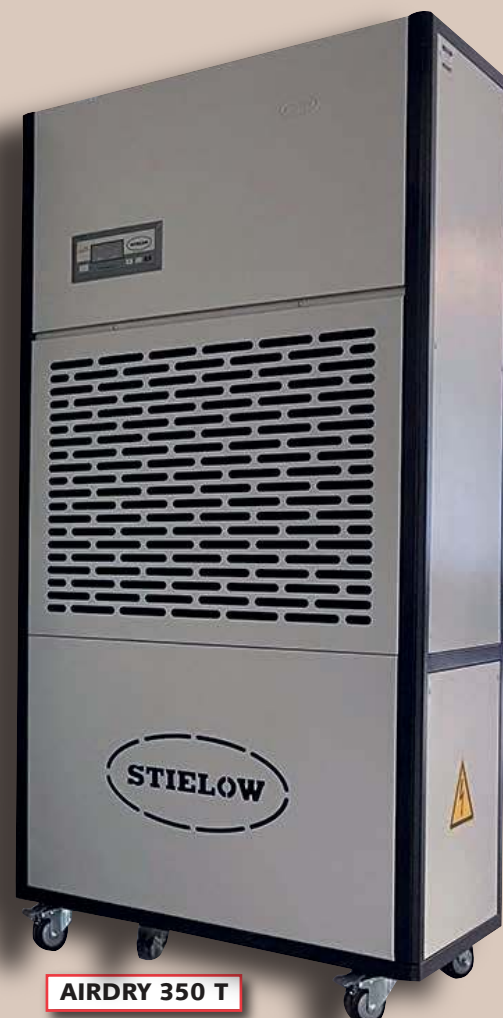
*silent drive*



**AIR DRY 250 T**



**AIR DRY 170 T**



**AIR DRY 350 T**

**AIR DRY 750 T**

**Operating range from -10 to 40°C**



Highly flexible thanks to optimum transport options, pushing, carrying, transport handles, transport with crane hooks, one-man operation – no problem with HANDY DRY construction dryers.

Service providers, construction companies and equipment rental companies have been taking advantage of the benefits of HANDY DRY construction drying units for many years. Whether as a single unit or

for "fleet use", HANDY DRY units last longer than others and impress with their extreme value in daily use, even in the rental business. Accidental damage is almost unheard of, so that the devices still have a considerable value even after long periods of use.

This fact and their low power consumption in conjunction with their simple handling with all the necessary extras such as condensate

water pumps, appliance sockets, special brackets and special paintwork make them superior.

Trust the original, don't make any compromises if your priority is to be able to dry reliably and permanently.

Please contact us if you have any special requests, we manufacture for over 300 fleet owners throughout Europe. Your wishes will be our obligation.

## 12-55 litre class

## Fleet Devices

Profi-Tipp  
für Wasserschaden



TG 10 P



TG 20 P



TG 30 P

TG 30-2 P

### Serienausstattung

- large water tank
- Water level indicator light
- automatic appliance switch-off when the water tank is full

- threaded drain connection for permanent water drainage
- XXL wheels with solid rubber tires
- Transport bracket
- hot-dip galvanized steel axle
- Axial fan
- aluframe-tec-composite
- hot gas defrosting
- permanent drying
- galvanized steel rims
- operating hours counter

### Extras

- special paint finish according to RAL
- special paint finish as required
- V2A housing
- Tropical version
- Aggregate sealing
- "Armor" paint – impact-absorbing relief paint
- Condensate water pump
- separate hygostat
- Electricity meter kWh
- Outdoor socket outlet

Benefit from over  
72 YEARS of experience  
in construction with  
**STIELOW**



## *All Weather ?!*

Ongoing weather and environmental disasters have become a dangerous factor in the global climate. River straightening and "bank restoration" lead to recurring flood disasters, and global climate shifts do the rest. Construction dryers are therefore more necessary than ever before, and HANDY DRY dehumidifiers are an indispensable technology in the field of flood and water damage restoration.

The products manufactured in Germany are exported in large quantities and are valued all over the world because they offer clear differences to cheap and plastic devices, which is invaluable, especially when used in international disaster areas. When used in developing countries, local repairs are practically impossible and a device failure can have devastating consequences.

Constant use under extreme conditions is a reference that speaks for itself. STIELOW makes no concessions when it comes to the durability and quality of its products. In complete contrast to the usual trend: cheaper, lighter, plastic-intensive, following the law that everything has to break quickly – is the STIELOW product HANDY DRY.

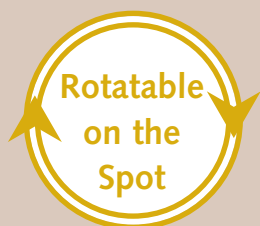
Anyone interested can see for themselves the significant quality benefits on offer with a test device.

**Leading in liters per kW electricity consumption**

**Maximum Force**

**66 - 131 litre class**

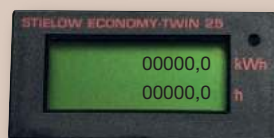
*request a test device*



**TG 50 P**



**TG 100 P**



*one-person operation*



**operating hours meter ECONOMY-TWIN 25 for all appliances**





- Discharge direction to the floor
- Drying under extreme conditions
- for ducts and shafts
- 1/2" hose connection
- no noise transmission

*30% less energy!*

**Special device for drying places that are difficult to access,  
such as shafts and ducts**

**33-55 litre class**

**400 - 700 cbm Volume**

*Technology  
for Masters*



**AIRDRY 4 D Special Construction**

**AIRDRY 3 D Special Construction**

**AIRDRY 3-2 D Special Construction**

**Discharge direction to the floor**

**Operating range from -10 to 40°C**



- XXL Wheels
- rotatable on the spot
- 200 mm air connections Ø inside
- efficiency up to 30 m height
- fully automatic operation
- electricity meter optional
- external data transmission optional

**800 - 1200 cbm Volume**

**66-131 litre class**

**New Products !**



**HANDY DRY TG 50 P Special Construction**



**HANDY DRY TG 100 P Special Construction**

Rotatable  
on the  
Spot

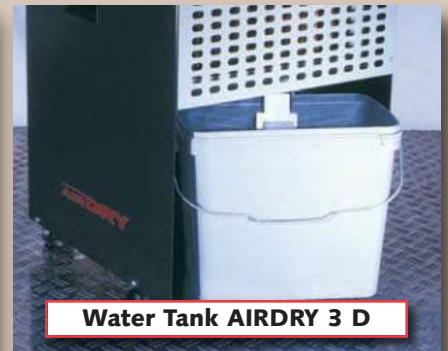
**Operating range from -10 to 40°C**



**Rolls AIRDRY compact D**



**V2A Housing**



**Water Tank AIRDRY 3 D**



**Recessed Handle**



**Water Tank AIRDRY compact D**



**Crane Hook**



**Air Mixer Box MG 500**



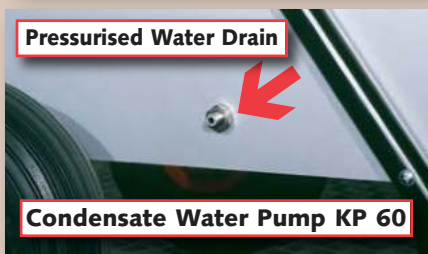
**Air Mixer Box HH 0**



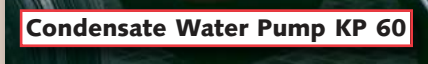
**Operating Hours Counter**



**Water Tank HANDYDRY TG 20 P**



**Pressurised Water Drain**



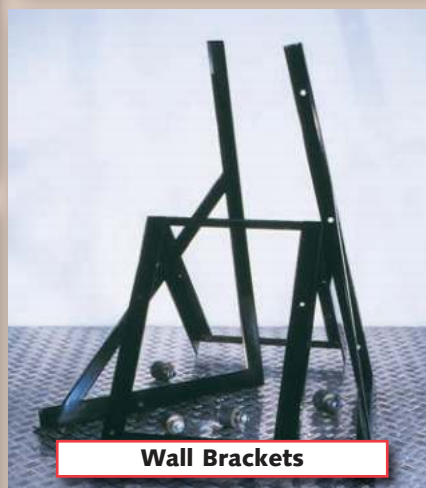
**Condensate Water Pump KP 60**



**Carry Handle AIRDRY 2 D**



**Wheel Selection  
Building Dryer HANDYDRY**



**Wall Brackets**



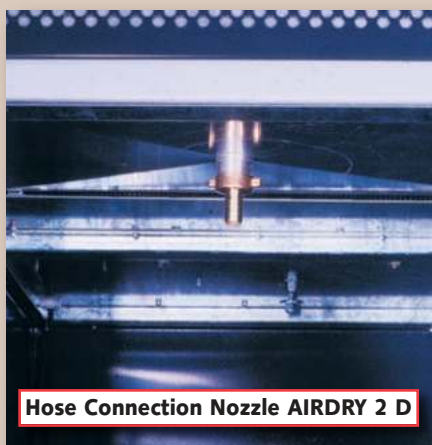
**Sound Absorbing Execution**





## Accessories & Details

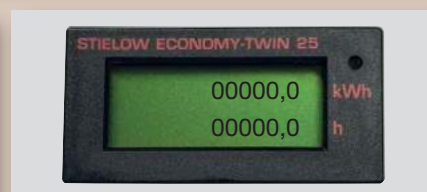
**G**  
Page 20 - 21



Hose Connection Nozzle AIRDRY 2 D



Lockable Swivel Castors AIRDRY 6 D



Special Paintwork



Main Switch



Dust Filter AIRDRY 2 D



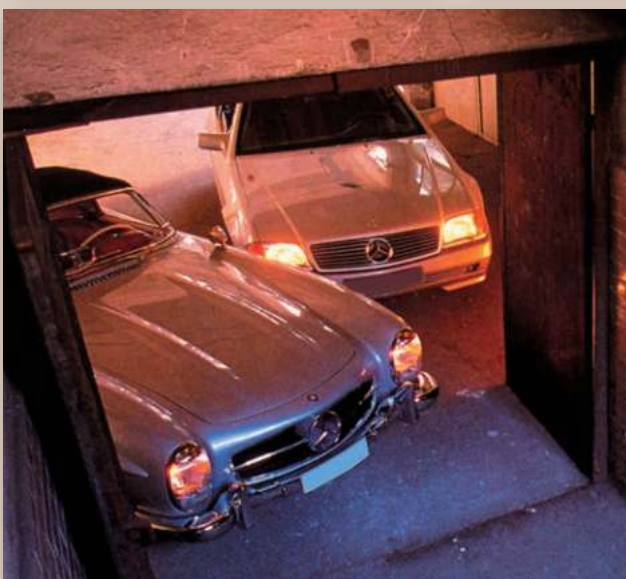
Inside View AIRDRY 25 SD

## Sophistication in Detail

**G**  
Page 21



... in use everywhere



STIELOW®

... Dehumidifier - no Compromises !



**Humidity Controller ST-3**



**Clima-Boy 230 V**



**Clima-Boy 400 V**



**Dew Point Controller DEHUMID V1**



**Permanent display Unit TEN**



**AIRDRY-Dehumat-report**



**Humidity Controller AIRDRY Dehumat**



**Humidity Controller ST-4**



**Frost Guard**





## DEHUMIDIFIER

	DRYMASTER T 8	AIRDRY mini D pro	AIRDRY mini plus D pro	AIRDRY mini bel D pro	AIRDRY mini bel plus D pro	AIRDRY mini aida D pro	AIRDRY mini aida plus D pro	AIRDRY compact D pro	AIRDRY compact plus D pro	AIRDRY 6 D pro	AIRDRY 6 plus D pro	AIRDRY T 6 D	AIRDRY 5 D pro	AIRDRY T 5 D	AIRDRY 4 D	AIRDRY T 4 D	AIRDRY 3 D	AIRDRY 3-2 D	AIRDRY T 3 D
Max. Room/guidline values Capacity up to cbm	100	50	50	50	50	50	50	100	100	100	100	100	250	250	400	400	600	700	600
Compressor PS	0,17	0,17	0,17	0,17	0,17	0,17	0,17	0,2	0,2	0,2	0,2	0,2	0,22	0,22	0,25	0,25	0,33	0,45	0,33
Compressor kW	0,12	0,12	0,12	0,12	0,12	0,12	0,12	0,15	0,15	0,15	0,15	0,15	0,16	0,16	0,18	0,18	0,24	0,35	0,24
Tension V/Hz	230/50	230/50	230/50	230/50	230/50	230/50	230/50	230/50	230/50	230/50	230/50	230/50	230/50	230/50	230/50	230/50	230/50	230/50	230/50
Power consumption connected load/Watt	155	150	160	150	160	150	160	180	195	180	200	200	290	290	330	330	420	550	420
Cooling capacity kcal/h	470	460	460	460	460	460	460	530	530	550	550	550	750	750	850	850	1100	1950	1100
Max. Water removal in 24 h/litre	14,0	14,1	14,1	14,1	14,1	14,1	14,1	16,2	16,2	16,2	16,1	16,1	27,4	27,4	33,1	33,1	47,5	55,1	47,5
at +30°C / 70 % r. H.	12,5	8,7	8,7	8,7	8,7	8,7	8,7	10,0	10,1	10,1	10,0	10,0	17,7	17,7	24,5	24,5	30,1	39,0	30,1
at +20°C / 70 % r. H.	6,8	6,9	6,9	6,9	6,9	6,9	6,9	8,2	8,2	7,9	7,8	7,8	10,0	10,0	12,2	12,2	18,7	29,5	18,7
at + 8°C / 70 % r. H.	4,7	4,1	4,1	4,1	4,1	4,1	4,1	5,1	5,1	4,7	4,6	4,6	4,9	4,9	6,1	6,1	6,7	11,5	6,7
Air output cbm/h	110-250	210	210	210	210	210	210	250	250	450	450	450	480	480	500	500	650	750	650
Work area °C	5 to 35	8 to 40	*-10 to 40	8 to 40	*-10 to 40	8 to 40	*-10 to 40	8 to 40	*-10 to 40	8 to 40	*-10 to 40	*-10 to 40	*-10 to 40	*-10 to 40	*-10 to 40	*-10 to 40	*-10 to 40	*-10 to 40	*-10 to 40
Dimesions: Height mm	500	450	450	575	575	370	370	580	580	580	580	415	580	415	590	415	590	590	415
Depth mm	280	290	290	290	290	290	290	220	220	430	430	455	430	455	410	455	410	410	455
Width mm	200	300	300	300	300	480	480	620	620	380	380	605	380	605	380	605	380	380	605
Net weight kg	12,1	14	14	19	19,5	17,5	18	25	25,5	28	28,5	29	28,5	29,6	29,5	30,0	30,5	32	30,6

\*assuming that the bath and drain are heated separately

## EQUIPMENT:

Humidity controller digital	●	●	●	●	●	●	●	●	●	●	●	●	●	●	●	●	●	●	●
Hot gas defrosting	—	—	●	—	●	—	●	—	●	—	●	●	●	●	●	●	●	●	●
Water tank capacity /litre	2,1	—	—	5	5	—	—	5	5	10	10	—	10	—	10	—	10	10	—
Water level indicator light	●	—	—	●	●	—	—	●	●	●	●	—	●	—	●	—	●	●	—
Automatic appliance switch-off when the water tank is full	●	—	—	●	●	—	—	●	●	●	●	—	●	—	●	—	●	●	—
Threaded drain connection for permanent water drainage	●	●	●	●	●	●	●	●	●	●	●	●	●	●	●	●	●	●	●
Defrost indicator light	—	●	●	●	●	●	●	●	●	●	●	●	●	●	●	●	●	●	●
Operating display	●	●	●	●	●	●	●	●	●	●	●	●	●	●	●	●	●	●	●
Main switch illuminated	●	—	—	—	—	—	—	—	—	—	—	●	—	●	●	●	●	●	●
Operating hours counter	—	●	●	●	●	●	●	●	●	●	●	●	●	●	●	●	●	●	●
Stainless internal parts	●	●	●	●	●	●	●	●	●	●	●	●	●	●	●	●	●	●	●
Transport bracket	—	—	—	—	—	—	—	—	—	—	—	—	—	—	—	—	—	—	—
Recessed handle	●	●	●	●	●	●	●	●	●	●	●	●	●	●	●	●	●	●	●
Carrying handles, galvanised	—	—	—	—	—	—	—	—	—	—	—	—	—	—	Accessories	—	Accessories	—	—
Wall brackets / Console	—	●	●	●	●	●	●	●	●	Accessories	Accessories	●	Accessories	●	Accessories	●	Accessories	Accessories	●
Dust filter	●	—	—	—	—	—	—	—	—	—	—	—	—	—	—	—	—	—	—
Device on castors (mobile)	●	Accessories	Accessories	Accessories	Accessories	Accessories	Accessories	Accessories	Accessories	●	●	●	●	●	●	●	●	●	●
XXL Transport castors	—	—	—	—	—	—	—	—	—	—	—	—	—	—	—	—	—	—	—
Blower type	Axial	Axial	Axial	Axial	Axial	Axial	Axial	Radial	Radial	Axial	Axial	Axial	Axial	Axial	Axial	Axial	Axial	Axial	Axial
Housing material	ABS	Alu	Alu	Alu	Alu	Alu	Alu	Alu	Alu	Alu	Alu	Alu	Alu	Alu	Alu	Alu	Alu	Alu	Alu



# Technical Data Professional Appliances

Page 24 - 25

					INDUSTRIAL				BUILDING DRYER						SPECIAL CONSTRUCTION				
AIRDRY T 3-2 D	AIRDRY 2 D	AIRDRY 1 D	AIRDRY 25 SD	AIRDRY 30 SD	AIRDRY 170 T	AIRDRY 250 T	AIRDRY 350 T	AIRDRY 750 T	HANDYDRY TG 10 P	HANDYDRY TG 20 P	HANDYDRY TG 30 P	HANDYDRY TG 30-2 P	HANDYDRY TG 50 P	HANDYDRY TG 100 P	AIRDRY 4 D SC	AIRDRY 3 D SC	AIRDRY 3-2 D SC	HANDYDRY TG 50 P SC	HANDYDRY TG 100 P SC
700	800	1200	2000	3000	1800	2500	3500	7500	100	400	600	700	800	1200	400	600	700	800	1200
0,45	0,5	1	2,5	3	3,1	3,7	6,3	11,1	0,2	0,25	0,33	0,45	0,5	1	0,25	0,33	0,45	0,5	1,0
0,35	0,37	0,73	1,84	2,21	2,3	2,7	4,6	8,2	0,15	0,18	0,24	0,35	0,37	0,73	0,18	0,24	0,35	0,37	0,73
230/50	230/50	230/50	400/50	400/50	400/50	400/50	400/50	400/50	230/50	230/50	230/50	230/50	230/50	230/50	230/50	230/50	230/50	230/50	230/50
550	590	1090	2990	3590	2800	3500	5700	12350	220	350	420	550	590	1090	330	420	550	718	1218
1950	2000	3200	6450	8500	6364	7568	12728	22677	555	865	1100	1950	2000	3200	850	1100	1950	2000	3200
55,1	66,2	131,1	183,16	219,79	170	240	350	750	16,2	33,2	47,6	55,1	66,3	131,2	33,1	47,5	55,1	66,3	131,2
39,0	46,8	77,8	111,79	132,15	103,7	146,4	213,6	457,7	10,1	21,6	30,2	39,0	46,9	77,9	21,5	30,1	39,0	46,9	77,9
29,5	35,4	52,7	76,21	91,45	70,3	99,8	145,6	312,0	8,0	12,4	18,8	29,5	31,4	52,7	12,2	18,7	29,5	35,5	52,7
11,5	13,8	23,1	33,66	40,42	31,2	44,1	64,3	137,8	4,3	6,2	6,8	11,5	13,9	23,1	6,1	6,7	11,5	13,8	23,2
750	840	1400	2400	2920	2000	2580	3800	7000	480	520	650	750	860	1400	1300	1450	1950	2800	2800
*-10 to 40	*-10 to 40	*-10 to 40	*-10 to 40	*-10 to 40	5 to 40	5 to 40	5 to 40	5 to 40	*-10 to 40	*-10 to 40	*-10 to 40	*-10 to 40	*-10 to 40	*-10 to 40	*-10 to 40	*-10 to 40	*-10 to 40	*-10 to 40	*-10 to 40
415	870	970	1110	1110	1610	1670	1700	1945	800	800	800	800	1030	1080	538	538	538	1030	1080
455	630	700	1110	1110	410	460	540	730	610	610	610	610	560	560	626	626	626	810	560
605	440	595	960	960	620	780	1190	1400	540	540	540	540	630	710	380	380	380	630	710
31,5	57	65	202	204	95	140	280	420	27,5	28	28,5	32	58	59	30,2	31,3	32,5	63	64
●	●	●	●	●	●	●	●	●	-	-	-	-	●	●	●	●	●	●	●
●	●	●	●	●	●	●	●	●	●	●	●	●	●	●	●	●	●	●	●
-	10	10	-	-	-	-	-	-	10	10	10	10	10	10	10	10	10	10	10
-	●	●	-	-	-	-	-	-	●	●	●	●	●	●	●	●	●	●	●
-	●	●	-	-	-	-	-	-	●	●	●	●	●	●	●	●	●	●	●
●	●	●	●	●	●	●	●	●	●	●	●	●	●	●	●	●	●	●	●
●	●	●	-	-	●	●	●	●	●	●	●	●	●	●	●	●	●	●	●
●	●	●	-	-	●	●	●	●	●	●	●	●	●	●	●	●	●	●	●
●	●	●	-	-	●	●	●	●	●	●	●	●	●	●	●	●	●	●	●
●	●	●	●	●	-	-	-	●	●	●	●	●	●	●	●	●	●	●	●
●	●	●	●	●	●	●	●	●	●	●	●	●	●	●	●	●	●	●	●
-	●	●	-	-	-	-	-	-	●	●	●	●	●	●	-	-	-	●	●
●	-	-	●	●	-	-	-	-	●	●	●	●	-	-	●	●	●	-	-
-	-	-	-	-	-	-	-	-	-	-	-	-	-	-	Accessories Accessories Accessories			-	-
●	Accessories Accessories Accessories Accessories				-	-	-	-	-	-	-	-	-	-	Accessories Accessories Accessories			-	-
-	●	●	●	●	●	●	●	●	-	-	-	-	●	●	-	-	-	●	●
●	●	●	●	●	●	●	●	●	-	-	-	-	●	●	●	●	●	●	●
-	-	-	-	-	-	-	-	-	●	●	●	●	●	●	-	-	-	●	●
Axial	Axial	Axial	Radial	Radial	Radial	Radial	Radial	Radial	Axial	Axial	Axial	Axial	Axial	Axial	Axial	Axial	Axial	Axial	Axial
Alu	Alu	Alu	Alu	Alu	Alu	Alu	Alu	Alu	Alu	Alu	Alu	Alu	Alu	Alu	Alu	Alu	Alu	Alu	Alu

Subject to Technical Changes

Page 25

## If humidity is your problem ... STIELOW becomes your partner



### Challenge us:

*STIELOW expert advice – customised –  
for optimum solutions*

### Ask for references:

*1,000-fold – we have them!*

### Request the test:

*Your personal trial device is ready!*



**STIELOW special  
construction:**  
There are many  
possibilities –  
please contact us.

**Profi-Tipp**  
für Schachttrocknung



**international industrial fair**



## The Production ...

... prompt, precise and perfect.

Modern production methods for your benefit with our equipment suppliers:

We get sheet metal into shape

**TRUMPF**

Machining centres **DMG** Lasertec

Switching and control with **SIEMENS**

colourful world of



*Service like a smile*



Service – quickly on site throughout Europe · Euro-Express-Service



**5 JAHRE GRATIS ERSATZTEILE\***

REGISTRIEREN UND AKTIVIEREN

Rufen Sie uns an  
**0049 64 84-91 21 0**

\*Es gelten die besonderen Ersatzteilbedingungen der Stielow GmbH Maschinen- und Apparatebau. Diese können jederzeit angefordert werden. Ihr Recht auf eine einjährige Herstellergarantie für Gewerbe und eine zweijährige Garantie für Privatanwender (diese schließen kostenlose Ersatzteile ein) bleiben von dieser Garantie unberührt, sofern keine Änderung im Sinne der Betriebsanleitung vorliegt. Umfang der Gewährleistung ausschließlich ausgeschlossen.  
Pionier für transportable Luftentfeuchter in Deutschland  
info@stielow.net Erste deutsche Maschinenfabrik für transportable Luftentfeuchter www.stielow.net

International Trademarks:

**STIELOW®**

**LUFTENTFEUCHTER**

® Hygieneprophylaxe  
**OXIULTRA 27**

**STIELOW JET®**

**AIR DRY®**

**DRYMASTER®**

**NOZZLEMASTER®**

**ECONOMY**

**HANDY DRY®**

## STIELOW GMBH

MASCHINEN- UND APPARATEBAU

Limburg Plant

Dehumidification Division

Industriestrasse 2-4

65614 Beselich-Obertiefenbach

Fon 0049 64 84 / 91 21-0

Fax 0049 64 84 / 91 21-50

**www.stielow.net**

Showroom open:

Mo. – Fr.

08.00 – 12.00 h

13.00 – 18.00 h

Info-Hotline

0049 64 84 / 91 21-90

Customer service nationwide

0049 64 84 / 91 21-95

Spare parts dispatch

0049 64 84 / 91 21-96

Domestic order acceptance

0049 64 84 / 91 21-13

Customer counselling

0049 64 84 / 91 21-77

Export

0049 64 84 / 91 21-62

e-mail

info@stielow.net



# STIELOW GMBH

MASCHINEN- UND APPARATEBAU

Limburg Plant  
Dehumidification Division  
Industriestrasse 2-4  
65614 Beselich-Obertiefenbach  
Fon 0049 64 84 / 91 21-0  
Fax 0049 64 84 / 91 21-50  
[www.stielow.net](http://www.stielow.net)

## Imprint

STIELOW GmbH  
Maschinen- und Apparatebau  
STIELOW-Haus Westendplatz  
60325 Frankfurt am Main  
Fon: +49 (0) 69 / 74 61 78  
Fax: +49 (0) 69 / 74 89 33  
e-mail: [info@stielow.net](mailto:info@stielow.net)  
Internet: [www.stielow.net](http://www.stielow.net)

Responsible for content:  
STIELOW GmbH  
Dehumidification Division  
Industriestrasse 2-4  
65614 Beselich

Register court Frankfurt am Main  
Register Number: HRB 22879

Sales tax identification number:  
DE 114217017

All rights reserved. No data from this offer  
may be reproduced or distributed without  
written authorisation. This prohibition also  
applies to inclusion in electronic databases  
and reproduction on CD-ROM.

Our General Terms and Conditions, as of  
January 2021, apply exclusively.  
The place of jurisdiction is Frankfurt am  
Main.  
Errors excepted.  
Technical changes reserved.  
Offers subject to change.

Germany's largest specialist company for air dehumidification and humidification  
First German machine factory for transportable dehumidifiers