

Dehumidifier Program Waterworks Professional Appliances

Edition 71-72

Production exclusively in Germany !



STIELOW®

Advantage and Technology made in Germany

On - Site - Service !

*Waterworks and STIELOW dehumidifiers -
... a solid conceptual unit since 1952.*

*Our products are a pioneering example of optimum
energy efficiency at the highest quality level in order
to successfully prevent your most expensive water,
condensation water, now and in the future and to
perfectly protect buildings and technology - guaranteed!*

*Made in Germany remains the measure of all things,
because only with production in Germany can we
reliably fulfil your high quality requirements.*



finest mechanical engineering tradition since 1952

In this brochure:



Overview

A

Page 4 - 7



Dehumidifier **AIR DRY**

B

Page 8 - 14



Industrial Dehumidifier **AIR DRY**

C

Page 15



Building Dryer **HANDY DRY**

D

Page 16-17



Special Construction

E

Page 18-19



Accessories

F

Page 20



Regulation

G

Page 21



Technical Data

H

Page 22-23



Extract from the delivery program

33 Dehumidifiers especially for Waterworks





Overview

A

Page 4 - 7

Condensation water forms in waterworks as soon as drinking water is pumped, treated and pressurised.

Our drinking water is food and the No. 1 source of nutrition, which is why waterworks, like any other food company, are run under hygienic aspects. First and foremost, this includes the clean and hygienic operation of well pits, pressure boosting systems, pipe cellars, valve chambers, machine and pump rooms, filter systems and elevated tanks as well as all systems with open water surfaces. The aim here is to protect the building itself with its installations, electrical equipment, measurement and control technology.

If condensation water becomes apparent, a hygiene problem begins with a chain reaction of consequences such as corrosion, moisture damage to the building structure in general with the formation of germs, mould stains, algae formation and a wide-ranging abundance of mould problems. Such abnormalities can no longer be tolerated in any waterworks today. These days, end consumers and customers of waterworks are also realising what a valuable commodity pure drinking water is in itself and that it is becoming increasingly important to handle it properly. This is another reason why dehumidification in waterworks is now a standard task that needs to be mastered using the most energy-efficient technology and intelligent control technology possible. Every water master knows that this process is complex and important and requires smooth operation with reliable technology in order not to be restricted in his comprehensive area of responsibility. This includes on-site advice as well as service and customer service in order to be fully covered in these three important areas.

STIELOW dehumidifiers prove this over 150,000 times a day in waterworks. So you too can trust the original!

Manufactured exclusively by hand in Germany from hundreds of individual parts, the variety of models still requires manual production to this day.

There is no better method than the STIELOW principle for preventing condensation in water supply systems.



... and condensation water remains the most expensive and useless water you produce !

Page 5

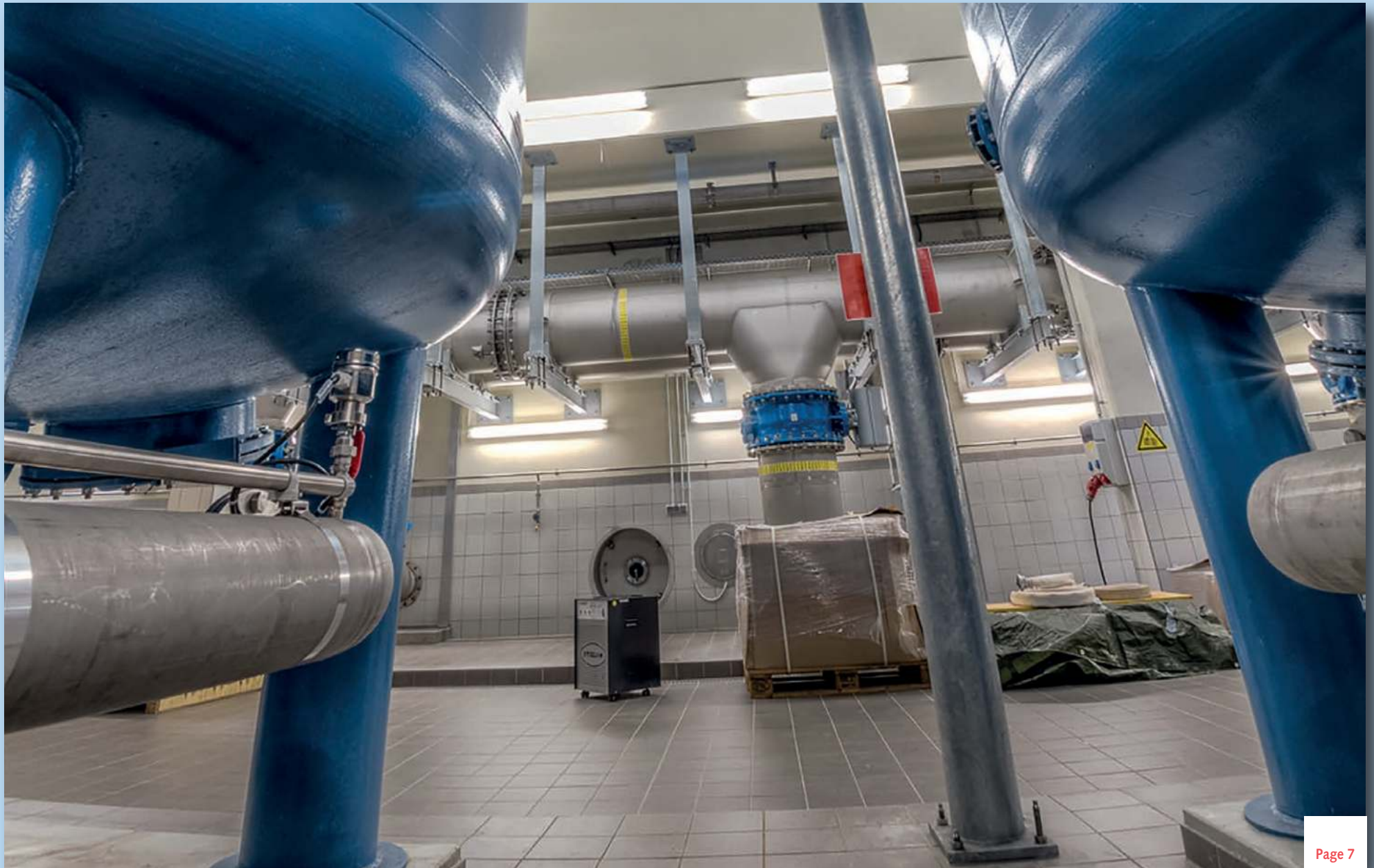




Overview

A

Page 4 - 7



Page 7



STIELOW dehumidifiers offer an economical solution with real advantages:

operation. Built in the shape of a chest, they only require an installation depth of 220 mm (for comparison, AIR DRY 6 D = 430 mm installation depth) and can therefore be installed in extremely confined spaces. The units are designed for wall mounting and take in air from the side.

Space is at a premium in well pits made of round prefabricated elements, in confined well bores and in well shafts in old buildings.

The STIELOW AIR DRY mini plus D pro, which is available in three designs, provides a remedy here: Portrait format without bucket, portrait format with bucket or landscape format without bucket.

The AIR DRY mini bel plus D pro with condensate water pump is the ideal solution if dehumidifier condensate must not be allowed to seep away in the immediate drinking water catchment area.

The STIELOW AIR DRY compact plus D pro units are operated via a built-in side channel radial fan and are therefore particularly quiet in



the 14 litre class



Dehumidifier **AIR DRY**

Fountain Parlours – Elevated tank

B

Page 8 - 14



- Humidity value min and humidity value max as well as switching hysteresis intuitively adjustable
- Proven for lowest operating costs
- Odourless operation, noise-reduced
- produced in accordance with VDMA, DIN and VDE in accordance with UVV
- Durable maintenance-free
- **constructive German mechanical engineering based on the quality standards of the 1970s**
- Highly stable and high quality
- Delivery is packed in sturdy German cardboard packaging (no China quality) and on a solid pallet



- Unique water extraction rates for all temperature ranges with maximum energy efficiency
- Speed-reduced refrigeration compressors, suitable for continuous operation, **no predetermined end of service life**
- alufame-tec-composite 1/3 of weight – 100 % recyclable
- Aluminium and zinc-coated sheets, hot-dip galvanised assemblies, non-ferrous and stainless steel metals of the highest quality are used
- Tube coil evaporator, self-cleaning with increased wall thicknesses and high alloy quality made from German CU cooling tube
- Intelligent moisture measurement
- Reliable automatic hot gas defrosting system for low temperature operation
- Permanent water drain
- Colour of your choice with your own logo as an extra
- Clear control panel with logical function displays



AIR DRY compact D pro



AIR DRY compact plus D pro

Variant "plus" to -10°C

the 16 litre class

Dehumidifier **AIRDRY** *Elevated tanks*



**This is real *cost-cutting:
a dry room for 34 cents a day!**

***(Power consumption of the STIELOW dehumidifier AIRDRY 6 plus D)**



AIRDRY 6 plus D pro



AIRDRY 5 D pro

AIRDRY room dehumidifiers are available with 25 device types especially for waterworks. These appliances achieve their particularly high water removal values in conjunction with maximum energy efficiency thanks to their design and optimum efficiency of between 12 and 14°C. This is where they differ from conventional appliances. In conjunction with the optimised heat exchangers - evaporator / condenser - compressors with reduced speed can be used as continuous-running units. This favours low energy consumption despite high water extraction rates with intelligent condensate drainage – a fact that puts STIELOW dehumidifiers at the forefront for waterworks and thus for use in the municipal sector.

The device of your choice can be colour-coded according to your wishes for an additional charge and bears the company logo or city emblem to standardise your device fleet.

To further increase the durability of your appliances, they can be sealed at the factory against aggressive air conditions (ozone treatment, etc.). This provides optimum corrosion protection for the refrigerant lines, some of which can be exposed to temperature fluctuations of up to 85 degrees, as well as optimum protection for the heat exchangers used in the appliance. If this protection is not enough, dehumidifiers with a V2A steel housing are also available.



Wall brackets are available ex works in various designs to simplify assembly. Otherwise, mobility is guaranteed by castors with roller bearings.

If STIELOW dehumidifiers are used in noise-sensitive areas, the Armstrong sound-absorbing version helps by reducing noise by up to 50 %.

All STIELOW dehumidifiers are soldered with high-quality silver solder to prevent 'cold caries'; standard soldering often leads to creeping contact corrosion, which can eventually cause refrigerant oil to escape. Such contact corrosion often leads to the loss of the entire refrigerant. STIELOW dehumidifiers are operated with environmentally friendly ester oils on a purely biological basis.



Dehumidifier [®] **AIRDRY**

Elevated tanks – filter halls

B

Page 8 - 14



The STIELOW dehumidifier works as a heat pump.

Condensation water in waterworks is caused by condensation of high humidity on cooling surfaces such as pipework, filter vessels or water reservoirs (also made of reinforced concrete) or the building structure itself. The STIELOW dehumidifier utilises this fact, as its cooling

surfaces continuously condense the excess water content from the air using a cooling unit and intelligently remove the moisture. This process technology is purely physical and therefore does not use any chemicals. After the cooling process through the dehumidification cycle, a further heat exchanger, the so-called condenser, reheats the air in your room so that there is actually no loss of temperature. The result is the

permanent and reliable prevention of condensation and condensation on pipes, technology and the building structure. The problem of constant condensation is thus fundamentally solved.

**AIRDRY 3 D****AIRDRY 3-2 D****AIRDRY 4 D**

the 33 - 55 litre class

Dehumidifier [®] AIRDRY

Elevated Tanks – Filter Halls



AIRDRY T 3 D

AIRDRY T 3-2 D

AIRDRY T 4 D



AIRDRY T 6 D

AIRDRY T 5 D

STIELOW dehumidifier units completely cover the important capacity range from 14 to 50 litres and have castors that can be removed, making the appliance ready for wall mounting without the need for an additional wall bracket. Space in the station is no longer required, thus saving space. Cleaning floor surfaces is simplified.

A real alternative to conventional Stielow dehumidifiers in the 150 to 600 m³ room capacity class, because Stielow AIRDRY dehumidifiers are mobile, but can also be mounted on the wall at any time.

A hose connection for continuous condensate drainage is of course provided, and the water tank is not required.

*30%
Energy saving!*



Dehumidifier **AIR DRY** *Elevated Tanks – Filter Halls*

B

Page 8 - 14

STIELOW AIR DRY 2 D and AIR DRY 1 D dehumidifiers are the first choice for filter and machine halls, are operated with 230 V and have an operating range between -10 and 40° C. They remain mobile, making it easy to clean their installation sites. They remain mobile, making it easy to clean their installation sites. Crane hooks are available as accessories, especially for large appliances, to facilitate transport over storeys. They are equipped with transport brackets and a clear panel that provides information on all operating statuses as standard.

The water is permanently drained via a 1/2 inch hose connection. Alternatively, the condensate can be collected in the water tank, in which case the appliance has a limit switch - an aid for recognising the amount of condensate accumulating when the appliance is reinstalled. If no drain is available on site, the condensate can be drained off using a KP 15 condensate pump with a delivery head of 1.5 m or a KP 60 with a delivery head of 6 m.

**AIR DRY 2 D****AIR DRY 1 D****the 66 - 131 litre class**

Dehumidifier [®] AIRDRY

Elevated Tanks – Filter Halls



silent drive



AIRDRY 25 SD



AIRDRY 30 SD



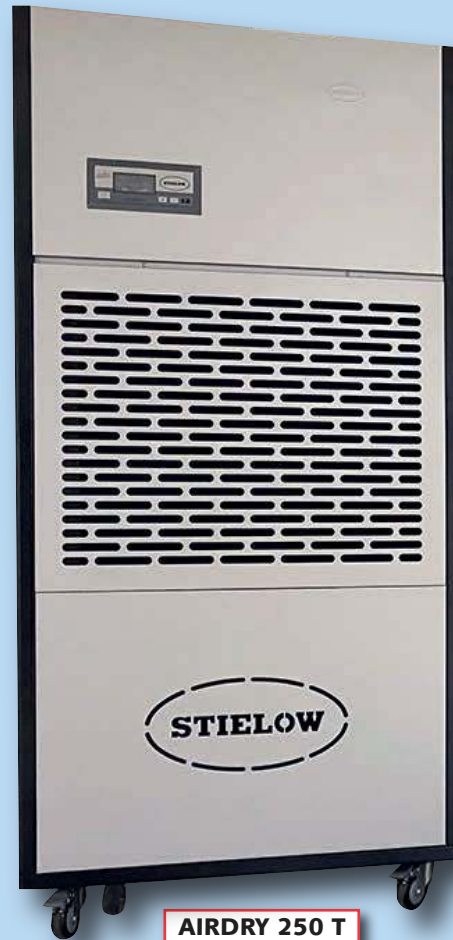
The AIRDRY 25 SD and AIRDRY 30 SD large dehumidifiers are among the quietest dehumidifiers and their air volume can be regulated via 'silent drive'. They are fully suitable for channel installation.



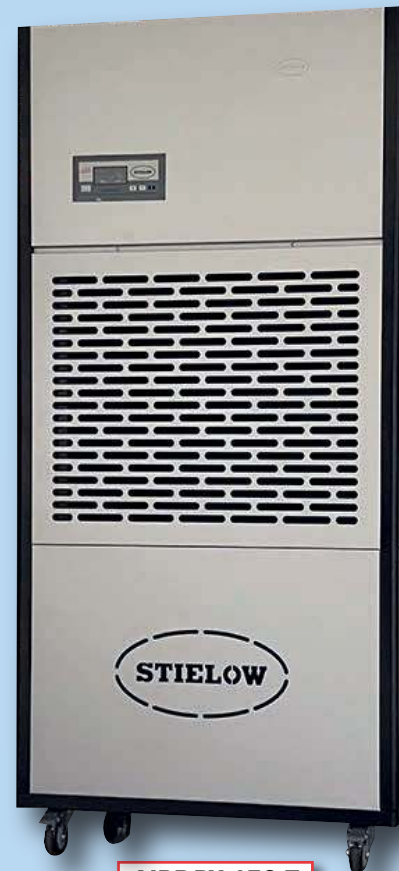


The new STIELOW AIRDRY 170 T, 250 T, 350 T, 750 T dehumidifiers set new standards in industrial dehumidification with a performance range of 170 to 750 litres per day, a high water removal capacity that is achieved in large systems under quiet operating conditions. The high-performance dehumidifiers are mobile and can be pushed directly against the wall at the rear, making them extremely space-saving in use – a novelty thanks to state-of-the-art dehumidification technology.

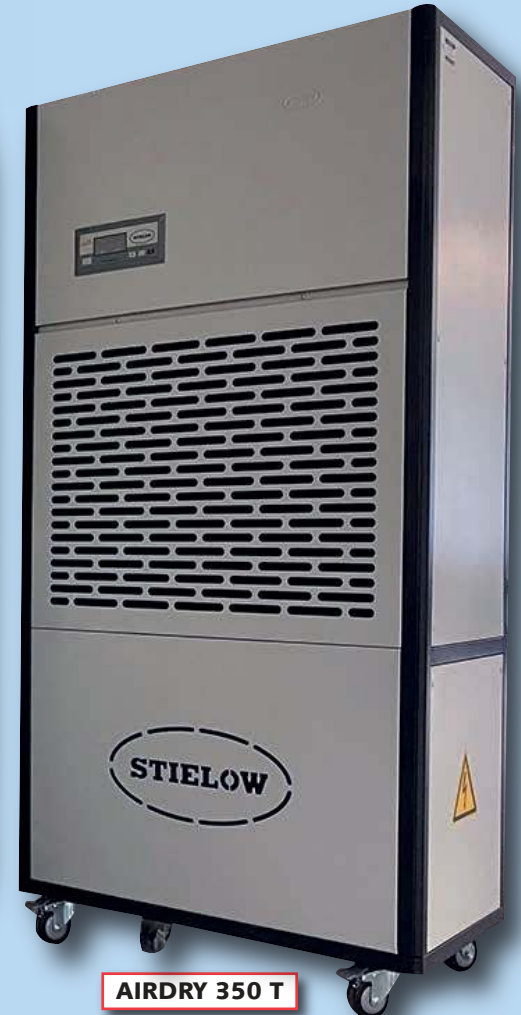
silent drive



AIRDRY 250 T



AIRDRY 170 T



AIRDRY 350 T

the 170 - 750 litre class



Who hasn't experienced it - the dictates of the red pen and the problem of strained budgets! When starting out with dehumidification technology, often only one device is initially purchased from the local authority. Now it is used alternately - perhaps on site in the event of a burst water pipe or as part of renovation and painting work or simply for drying, sometimes here and sometimes there. In this case, no complex control technology is required, but a robust appliance design that is hard-wearing and

resilient. The HANDY DRY TG 10 P, TG 20 P and TG 30 P appliances fulfil these requirements.

Today, the TG 50 P and TG 100 P models represent a genuine alternative to the stationary AIR DRY 2 D and AIR DRY 1 D appliances (page 12) and are therefore also equipped with sophisticated control technology and fully automatic humidity control. They are characterised by their slim design: Depth TG 50 P and

TG 100 P only 560 mm compared to AIR DRY 2 D = 630 mm and AIR DRY 1 D = 700 mm.

Thanks to the large solid rubber tyres, flat tyres are impossible with all HANDY DRY construction dehumidifier. The large transport handles on the table side with footrest area on the front of the appliances make handling much easier, whether on uneven floors, difficult terrain or stairs.

Leading in litres per kW electricity consumption.



TG 10 P



TG 20 P



TG 30 P



TG 30-2 P



Building Dryer **HANDY DRY**

D

Page 16-17



Extras

- special paintwork to RAL
- special paintwork as required
- V2A enclosure
- tropical design
- unit sealing
- external socket
- "armoured" paint – impact-absorbing relief paint
- condensate water pumps
- separate hygrostat
- stackable / carrying points
- Electricity meter kW/h

Highly flexible thanks to optimum transport options, pushing, carrying, transport handles, transport with crane hooks, one-man operation - all no problem with HANDY DRY Building Dryer.

... with intelligent humidity measurement and control

Standard equipment

- large water tank
- Water level indicator lights
- automatic appliance switch-off when the water tank is full
- threaded drain connection for continuous water drainage
- XXL wheels with solid rubber tyres
- Transport bracket
- hot-dip galvanised steel axles
- Axial fan
- aluframe-tec-composite 1/3 in weight - 100% recyclable
- intelligent humidity measurement
- reliable automatic hot gas defrosting for low temperature operation
- clear control panel with logical function displays
- permanent drying
- galvanised steel rims
- operating hours counter



TG 50 P



TG 100 P

the 66 -121 litre class



*Technology
for Masters*

Shaft drying is an important issue when it comes to room hygiene, as condensation water often remains in constricted buildings and pump sumps, which is difficult

to reach and therefore often leads to hygiene problems and contamination. According to the current guidelines of the health authorities, special attention is paid

to areas of buildings that are difficult to access. The Stielow AIRDRY 4 D and AIRDRY 3 D dehumidifiers from the special construction programme for duct and man-hole drying provide a remedy here.



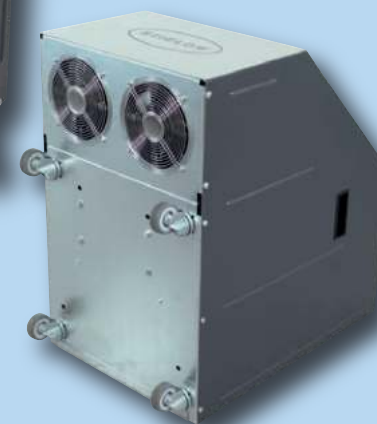
AIRDRY 4 D Special Construction



AIRDRY 3 D Special Construction



AIRDRY 3-2 D Special Construction



with two additional fans



Centre rear swivel castors

High filter halls, long corridors and special requirements demand particularly high air capacities from the dehumidifiers, if necessary also in combination with air ducts, spiral ducts or flexible air hoses. STIELOW TG 50 P and TG 100 P dehumidifiers from the special construction programme have been specially designed for these tasks. These units have a very high air output thanks to additional fans. Building heights of 30 metres and more can be dried without any problems.



HANDYDRY TG 50 P Special Construction



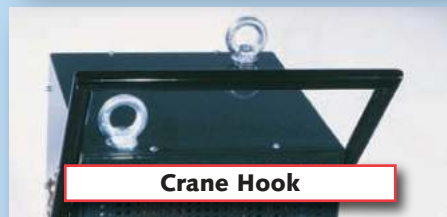
HANDYDRY TG 100 P Special Construction

the 66 -131 litre class

Accessories · Wall Brackets, Condensate Conveyor



The extensive range of accessories for STIELOW dehumidifiers is extremely popular and is therefore ordered by many customers. There are 260 equipment variants to choose from; 1200 colours can be selected. Units in V2A design are available. Please refer to the price list for more information. The STIELOW HANDYDRY TG 20 dehumidifier 'on the crane hook' shown here demonstrates how useful this accessory can be in the waterworks. MG 500 air mixer box and HH 0 air mixer box are ideal if the dehumidified air is to be transported in a targeted manner in order to blow it out at a desired location.





The Regulation

Humidity controllers are essential for the operation of the dehumidifier. In addition to the built-in, standard humidity controllers, separate devices are also often used. In addition to the familiar STIELOW ST-3 and ST-4 humidity controllers, the DEHUMID V1 dew point controller is also available. The separate humidity controllers are generally connected between the mains supply and the dehumidifiers. When ordering, please note that all dehumidifiers can be ordered with cable lengths of 10, 15, 20 and 30 metres as accessories and special equipment. The ST-3 and V1 units have built-in contactors and are therefore suitable for all dehumidifiers. The ST-4 controller should only be used for models with a power consumption of up to 420 W.

Clima-Boy ultra



A special brochure provides information on our extensive range of Clima-Boy appliances with perfected dew point control.

Clima-Boy 230 V

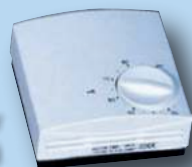
Clima-Boy 400 V

Permanent Indicator TEN



Humidity Controller AIRDRY Dehumat

Humidity Controller ST-4



Humidity Controller LE/LB



Dew Point Controller DEHUMID V1



Humidity Controller ST-3



AIRDRY 4 D / AIRDRY 3 D



Sewer and Manhole Drying

Special Construction

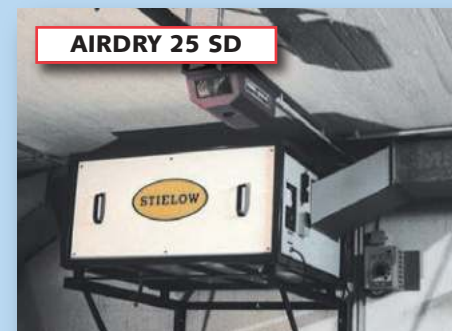
STIELOW produces exclusively in Germany. Development takes place exclusively in-house, from the first design draft to the finished end product. This makes it possible to incorporate changes that serve the technical progress and improvement of the products into series production at short notice.

Nevertheless, it is not always possible to fulfil every customer request with standard products. For this reason, the special customisation department has been established in production for years. Here it is possible to take customer requirements into account and build appliances with 2.5, 3 and 5 hp output, among other things. Process engineering solutions for condensation dryers are offered, which can also be integrated into duct systems.

The appliance shown works with a 2.5 hp unit, taking into account forced ventilation for this special application, which was prescribed by the building supervisory authority.

The customised components are naturally integrated into the logistics of the long-term spare parts supply.

AIRDRY 25 SD



Ask for the test: Your personal test device is ready !

AIRDY mini plus D pro	AIRDY mini bel plus D pro	AIRDY mini aida plus D pro	AIRDY compact plus D pro	AIRDY 6 plus D pro	AIRDY T 6 D	AIRDY 5 D pro	AIRDY T 5 D	AIRDY 4 D	AIRDY 4 T D	AIRDY 3 D	AIRDY 3-2 D	AIRDY T 3 D	AIRDY T 3-2 D	AIRDY 2 D
----------------------------------	--------------------------------------	---------------------------------------	-------------------------------------	-------------------------------	------------------------	--------------------------	------------------------	----------------------	------------------------	----------------------	------------------------	------------------------	--------------------------	----------------------

Max. Room/guideline values Capacity up to cbm		100	100	100	150	150	150	250	250	400	400	600	700	600	700	800
Compressor PS		0,17	0,17	0,17	0,2	0,2	0,2	0,22	0,22	0,25	0,25	0,33	0,45	0,33	0,45	0,5
Compressor kW		0,12	0,12	0,12	0,15	0,15	0,15	0,16	0,16	0,18	0,18	0,24	0,35	0,24	0,35	0,37
Tension V/Hz		230/50	230/50	230/50	230/50	230/50	230/50	230/50	230/50	230/50	230/50	230/50	230/50	230/50	230/50	230/50
Power consumption connected load/Watt		160	160	160	195	200	200	290	290	330	330	420	550	420	550	590
Cooling capacity kcal/h		460	460	460	530	550	550	750	750	850	850	1100	1950	1100	1950	2000
Max. Water removal in 24 h/litre		14,1	14,1	14,1	16,2	16,1	16,1	27,4	27,4	33,1	33,1	47,5	55,1	47,5	55,1	66,2
at +30°C / 70 % r. H.		8,7	8,7	8,7	10,1	10,0	10,0	17,7	17,7	24,5	24,5	30,1	39,0	30,1	39,0	46,8
at +20°C / 70 % r. H.		6,9	6,9	6,9	8,2	7,8	7,8	10,0	10,0	12,2	12,2	18,7	29,5	18,7	29,5	35,4
at + 8°C / 70 % r. H.		4,1	4,1	4,1	5,1	4,6	4,6	4,9	4,9	6,1	6,1	6,7	11,5	6,7	11,5	13,8
Air output cbm/h		210	210	210	250	450	450	480	480	500	500	650	750	650	750	840
Work area °C		*-10 to 40	*-10 to 40	*-10 to 40	*-10 to 40	*-10 to 40	*-10 to 40	*-10 to 40	*-10 to 40	*-10 to 40	*-10 to 40	*-10 to 40	*-10 to 40	*-10 to 40	*-10 to 40	*-10 to 40
*assuming that the bath and drain are heated separately																
Dimensions:	Height mm	450	575	370	580	580	415	580	415	590	415	590	590	415	415	870
	Depth mm	290	290	290	220	430	455	430	455	410	455	410	410	455	455	630
	Width mm	300	300	620	620	380	605	380	605	380	605	380	380	605	605	440
Net weight	kg	14	19,5	18	25,5	28,5	29	28,5	29,6	29,5	30,0	30,5	32	30,3	31,5	57

EQUIPMENT:[illegible]

			INDUSTRIAL				BUILDING DRYER						SPECIAL CONSTRUCTION				
AIRDRY 1 D	AIRDRY 25 SD	AIRDRY 30 SD	AIRDRY 170 T	AIRDRY 250 T	AIRDRY 350 T	AIRDRY 750 T	HANDYDRY TG 10 P	HANDYDRY TG 20 P	HANDYDRY TG 30 P	HANDYDRY TG 30-2 P	HANDYDRY TG 50 P	HANDYDRY TG 100 P	AIRDRY 4 D SC	AIRDRY 3 D SC	AIRDRY 3-2 D SC	AIRDRY TG 50 P SC	AIRDRY TG 100 P SC
1200	2000	3000	1800	2500	3500	7500	100	400	600	700	800	1200	400	600	700	800	1200
1	2,5	3	3,1	3,7	6,3	11,1	0,2	0,25	0,33	0,45	0,5	1	0,25	0,33	0,45	0,5	1,0
0,73	1,84	2,21	2,3	2,7	4,6	8,2	0,15	0,18	0,24	0,35	0,37	0,73	0,18	0,24	0,35	0,37	0,73
230/50	400/50	400/50	400/50	400/50	400/50	400/50	230/50	230/50	230/50	230/50	230/50	230/50	230/50	230/50	230/50	230/50	230/50
1090	2990	3590	2800	3500	5700	12350	220	350	420	550	590	1090	330	420	550	718	1218
3200	6450	8500	6364	7568	12728	22677	555	865	1100	1950	2000	3200	850	1100	1950	2000	3200
131,1	183,16	219,79	170	240	350	750	16,2	33,2	47,6	55,1	66,3	131,2	33,1	47,5	55,1	66,3	131,2
77,8	111,79	132,15	103,7	146,4	213,6	457,7	10,1	21,6	30,2	39,0	45,9	77,9	21,5	30,1	39,0	46,9	77,9
52,7	76,21	91,45	70,3	99,8	145,6	312,0	8,0	12,4	18,8	29,5	31,4	52,7	12,2	18,7	29,5	35,5	52,7
23,1	33,66	40,42	31,2	44,1	64,3	137,8	4,3	6,2	6,8	11,5	13,9	23,1	6,1	6,7	11,5	13,8	23,2
1400	2400	2920	2000	2580	3800	7000	480	520	650	750	860	1400	1300	1450	750	2800	2800
*-10 to 40	*-10 to 40	*-10 to 40	5 to 40	5 to 40	5 to 40	5 to 40	*-10 to 40	*-10 to 40	*-10 to 40	*-10 to 40	*-10 to 40	*-10 to 40	*-10 to 40	*-10 to 40	*-10 to 40	*-10 to 40	*-10 to 40
970	1110	1110	1610	1670	1700	1945	800	800	800	800	1030	1080	538	538	538	1030	1080
700	1110	1110	410	460	540	730	610	610	610	610	560	560	626	626	626	810	560
595	960	960	620	780	1190	420	540	540	540	540	630	710	380	380	380	630	710
65	202	204	95	140	280	420	27,5	28	28,5	32	58	59	30,2	31,3	32,5	63	64
●	●	●	●	●	●	●	-	-	-	-	●	●	●	●	●	●	●
●	●	●	●	●	●	●	●	●	●	●	●	●	●	●	●	●	●
10	-	-	-	-	-	-	10	10	10	10	10	10	10	10	10	10	10
●	-	-	-	-	-	-	●	●	●	●	●	●	●	●	●	●	●
●	-	-	-	-	-	-	●	●	●	●	●	●	●	●	●	●	●
●	●	●	●	●	●	●	●	●	●	●	●	●	●	●	●	●	●
●	-	-	●	●	●	●	●	●	●	●	●	●	●	●	●	●	●
●	-	-	●	●	●	●	●	●	●	●	●	●	●	●	●	●	●
●	●	●	-	-	-	-	●	●	●	●	●	●	●	●	●	●	●
●	●	●	-	-	-	-	●	●	●	●	●	●	●	●	●	●	●
●	●	●	●	●	●	●	●	●	●	●	●	●	●	●	●	●	●
●	-	-	-	-	-	-	●	●	●	●	●	●	-	-	-	●	●
-	●	●	-	-	-	-	●	●	●	●	-	-	●	●	●	-	-
-	-	-	-	-	-	-	-	-	-	-	-	-	Accessories	Accessories	Accessories	-	-
Accessories	Accessories	Accessories	-	-	-	-	-	-	-	-	-	-	Accessories	Accessories	Accessories	-	-
●	●	●	●	●	●	●	-	-	-	-	●	●	-	-	-	●	●
●	●	●	●	●	●	●	-	-	-	-	●	●	●	●	●	●	●
-	-	-	-	-	-	-	●	●	●	●	●	●	-	-	-	●	●
Axial	Radial	Radial	Radial	Radial	Radial	Radial	Axial	Axial	Axial	Axial	Axial	Axial	Axial	Axial	Axial	Axial	Axial
Alu	Alu	Alu	Alu	Alu	Alu	Alu	Alu	Alu	Alu	Alu	Alu	Alu	Alu	Alu	Alu	Alu	Alu





Calm returns



... where STIELOW dehumidifiers do their job reliably

Wherever water is pumped, treated and pressurised ...



STIELOW®

... an idea prevails

International Trademarks:

STIELOW®

LUFTENTFEUCHTER

® Hygieneprophylaxe

OXIULTRA 27

STIELOW JET®

AIR DRY®

DRY MASTER®

NOZZLEMASTER®

ECONOMY

HANDY DRY®

The Production ...
... prompt, precise and perfect.

Modern production methods for your
benefit with our equipment suppliers:

We get sheet metal into shape



Machining centres **DMG** Lasertec

Switching and control with **SIEMENS**

colourful world of



Service like a smile



Service – quickly on site throughout
Europe · Euro-Express-Service



5 JAHRE GRATIS ERSATZTEILE*

REGISTRIEREN UND AKTIVIEREN

Rufen Sie uns an
0049 64 84-91210

*Es gelten die besonderen Ersatzteilkonditionenbedingungen der Stielow GmbH Maschinen- und Apparatebau. Diese können jederzeit angefordert werden. Ihr Recht auf eine einjährige Herstellergarantie für Gewerke und eine zweijährige Garantie für Privatpersonen (diese schließen kostenlose Ersatzteile ein) bleiben von dieser Garantie unberührt, ordentliche Bedienung im Sinne der Betriebsanleitung vorausgesetzt. Umfang der Garantie lautet ausdrücklich ausgeschlossen.

info@stielow.net Pionier für transportable Luftentfeuchter in Deutschland Erste deutsche Maschinenfabrik für transportable Luftentfeuchter www.stielow.net

STIELOW GMBH

MASCHINEN- UND APPARATEBAU

Limburg Plant
Dehumidification Division
Industriestrasse 2-4
65614 Beselich-Obertiefenbach
Fon 0049 64 84 / 91 21-0
Fax 0040 64 84 / 91 21-50
www.stielow.net

Showroom open:	Mo. – Fr. 08.00 – 12.00 h 13.00 – 18.00 h
Info-Hotline	0049 64 84 / 91 21-90
Customer service nationwide	0049 64 84 / 91 21-95
Spare parts dispatch	0049 64 84 / 91 21-96
Domestic order acceptance	0049 64 84 / 91 21-13
Customer counselling	0049 64 84 / 91 21-77
Export	0049 64 84 / 91 21-62
e-mail	info@stielow.net

Imprint

STIELOW GmbH
Maschinen- und Apparatebau
STIELOW-Haus Westendplatz
60325 Frankfurt am Main
Fon: +49 (0) 69 / 74 61 78
Fax: +49 (0) 69 / 74 89 33
e-mail: info@stielow.net
Internet: www.stielow.net

Responsible for content:
STIELOW GmbH
Dehumidification Division
Industriestrasse 2-4
65614 Beselich

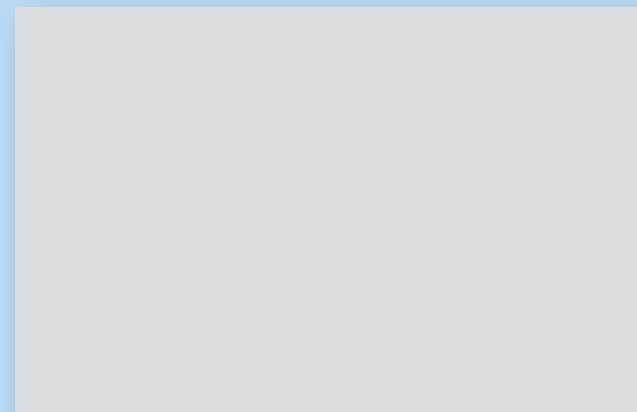
Register court Frankfurt am Main
Register Number: HRB 22879

Sales tax identification number:
DE 114217017

All rights reserved. No data from this offer
may be reproduced or distributed without
written authorisation. This prohibition also
applies to inclusion in electronic databases
and reproduction on CD-ROM.

Our General Terms and Conditions, as of
January 2021, apply exclusively.
The place of jurisdiction is Frankfurt am Main.
Errors excepted.
Technical changes reserved.
Offers subject to change.

We will be happy to advise you:



Germany's largest specialist company for air dehumidification and humidification
First German machine factory for transportable dehumidifiers